

Intelligent Light Solutions

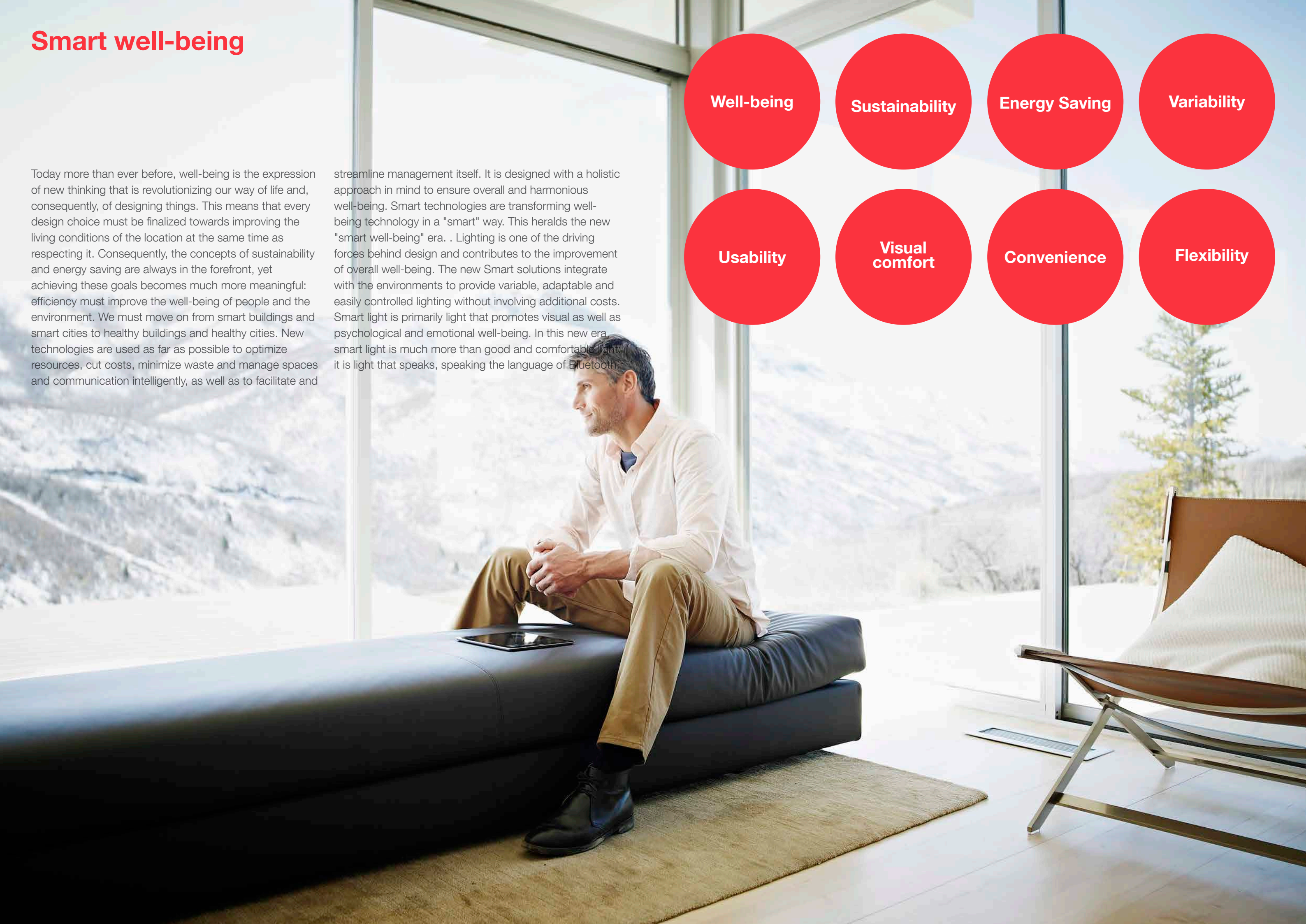


Lighting innovation for people.

Smart well-being

Today more than ever before, well-being is the expression of new thinking that is revolutionizing our way of life and, consequently, of designing things. This means that every design choice must be finalized towards improving the living conditions of the location at the same time as respecting it. Consequently, the concepts of sustainability and energy saving are always in the forefront, yet achieving these goals becomes much more meaningful: efficiency must improve the well-being of people and the environment. We must move on from smart buildings and smart cities to healthy buildings and healthy cities. New technologies are used as far as possible to optimize resources, cut costs, minimize waste and manage spaces and communication intelligently, as well as to facilitate and

streamline management itself. It is designed with a holistic approach in mind to ensure overall and harmonious well-being. Smart technologies are transforming well-being technology in a "smart" way. This heralds the new "smart well-being" era. . Lighting is one of the driving forces behind design and contributes to the improvement of overall well-being. The new Smart solutions integrate with the environments to provide variable, adaptable and easily controlled lighting without involving additional costs. Smart light is primarily light that promotes visual as well as psychological and emotional well-being. In this new era, smart light is much more than good and comfortable light: it is light that speaks, speaking the language of Bluetooth.



Bluetooth Low energy and mesh networks

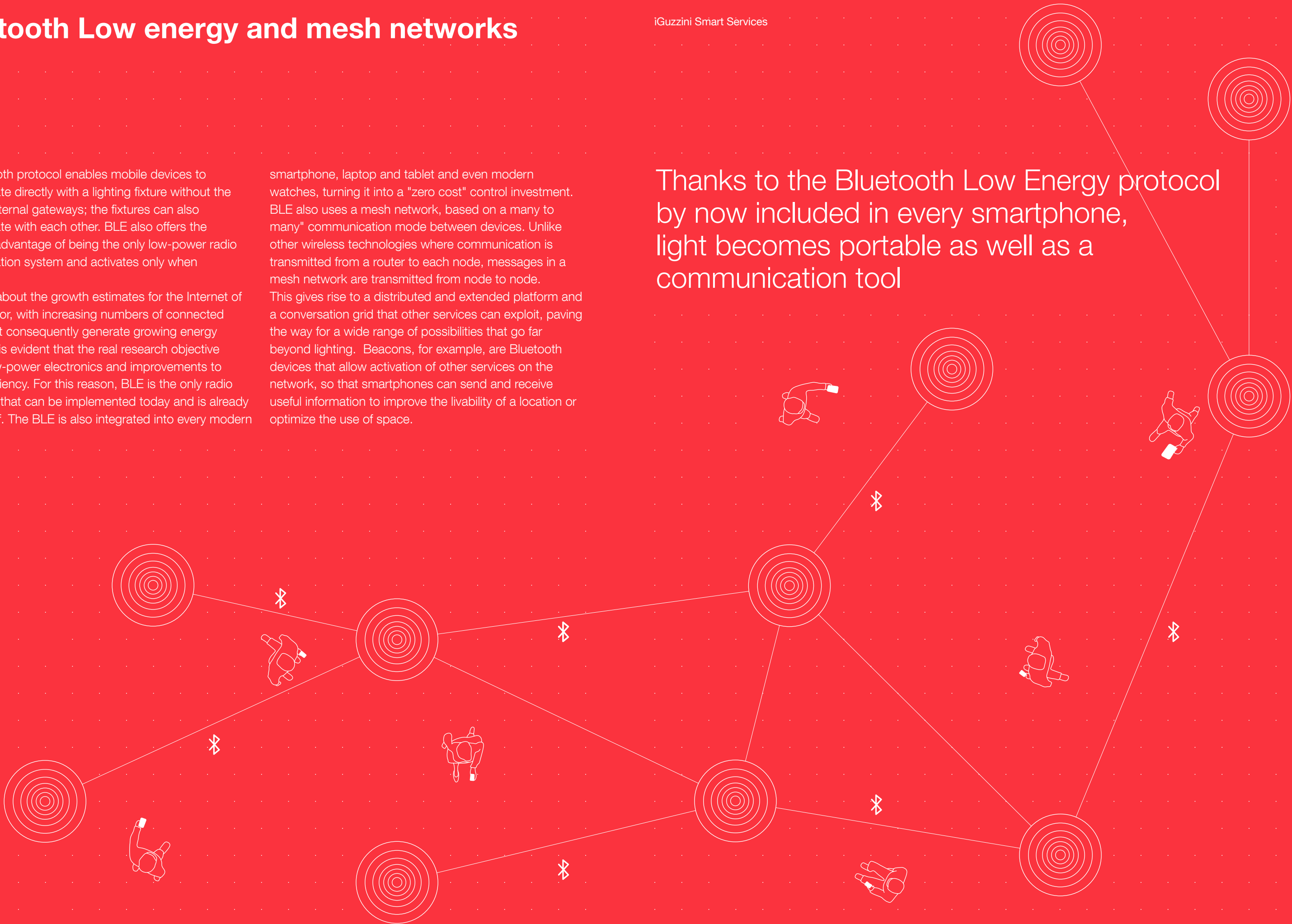
iGuzzini Smart Services

The Bluetooth protocol enables mobile devices to communicate directly with a lighting fixture without the need for external gateways; the fixtures can also communicate with each other. BLE also offers the significant advantage of being the only low-power radio communication system and activates only when necessary.

If we think about the growth estimates for the Internet of Things sector, with increasing numbers of connected devices that consequently generate growing energy demand, it is evident that the real research objective today is low-power electronics and improvements to energy efficiency. For this reason, BLE is the only radio technology that can be implemented today and is already future-proof. The BLE is also integrated into every modern

smartphone, laptop and tablet and even modern watches, turning it into a "zero cost" control investment. BLE also uses a mesh network, based on a many to many" communication mode between devices. Unlike other wireless technologies where communication is transmitted from a router to each node, messages in a mesh network are transmitted from node to node. This gives rise to a distributed and extended platform and a conversation grid that other services can exploit, paving the way for a wide range of possibilities that go far beyond lighting. Beacons, for example, are Bluetooth devices that allow activation of other services on the network, so that smartphones can send and receive useful information to improve the livability of a location or optimize the use of space.

Thanks to the Bluetooth Low Energy protocol by now included in every smartphone, light becomes portable as well as a communication tool



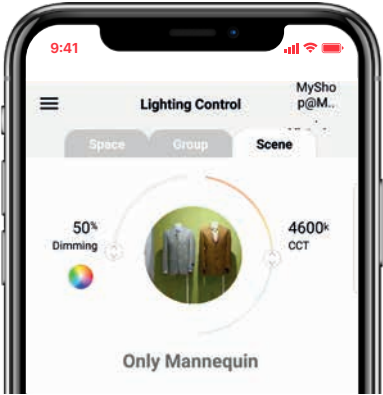
Smart Light Control

Smart Light Control - Quick BLE

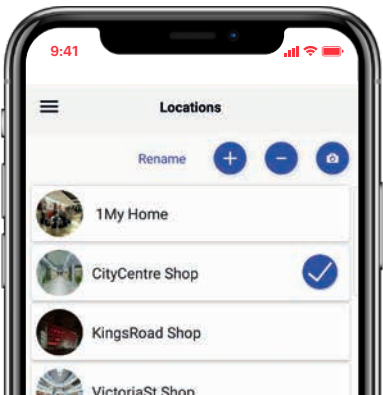
Light becomes portable

The iGuzzini Smart Light Control App helps you manage the Quick BLE control system in a simple and intuitive way, from programming to creating groups and lighting scenarios with different users and even remotely. Everything is achieved using only the Bluetooth protocol, thereby allowing you to control a new lighting system even where it would be impossible to install new wiring. Simply provide the power supply for the appliances and then leave management of the system to digital signals. The App communicates directly with each BLE or DALI device through the BLE-DALI interface.

The system manager can test switching on for individual luminaires directly underneath them with the advantage of seeing the effect immediately, and then proceed with empirical programming to create groups and lighting scenarios and verifying their effectiveness on the spot. It is also possible to create multiple users, set limitations and privileges that ensure management of the system in accordance with the criteria defined by the administrator (super-user). Lastly, thanks to the BLE-Wifi Bridge included in the system, a smart device or PC can be used to view and manage the system remotely and call up the calendar of automatic scenes.



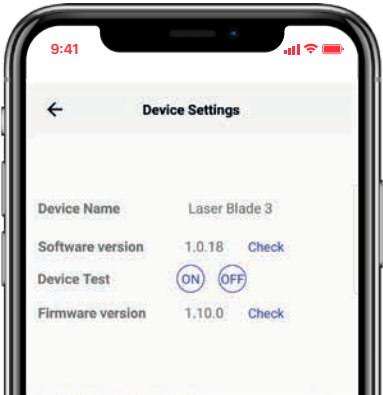
Lighting Control
Creation and selection of 16 lighting scenarios and the possibility of controlling luminosity and colour temperature with sliders



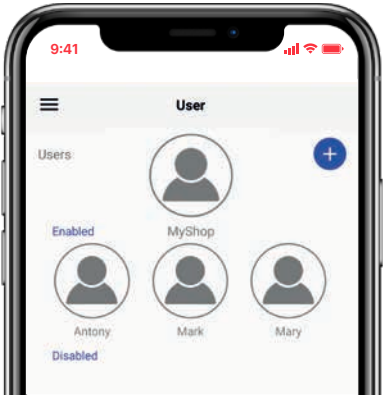
Locations
Management of various owned or under management buildings/ locations .



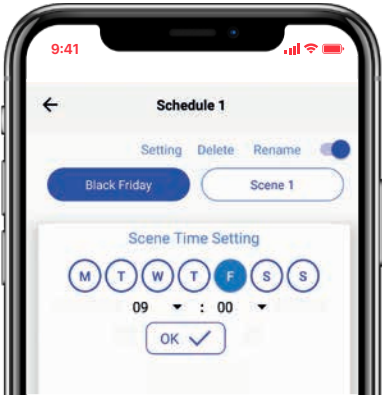
Group Setting
Creation and modification of up to 16 groups



Device Settings
Recognition of devices is made easy thanks to practical ON-OFF keys. This stage also allows access to a powerful customisation menu for individual devices such as dimming times, names, etc.



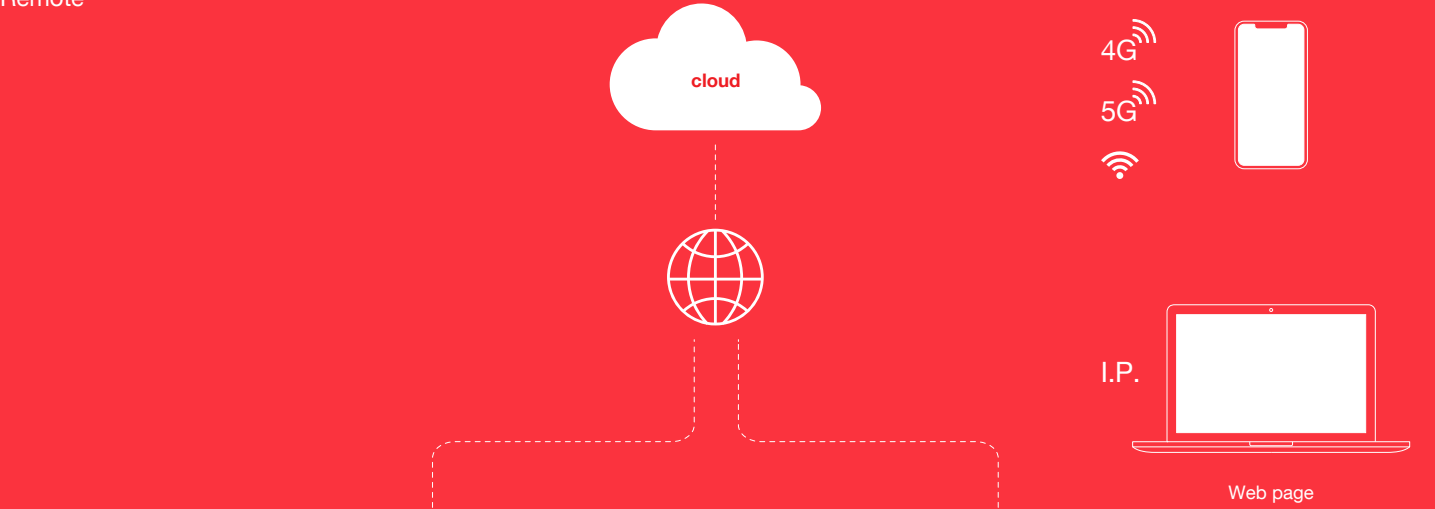
Users
Adding users with passwords and different operating levels, such as super-users (who have all modification rights) and users who are only allowed to manage lighting.



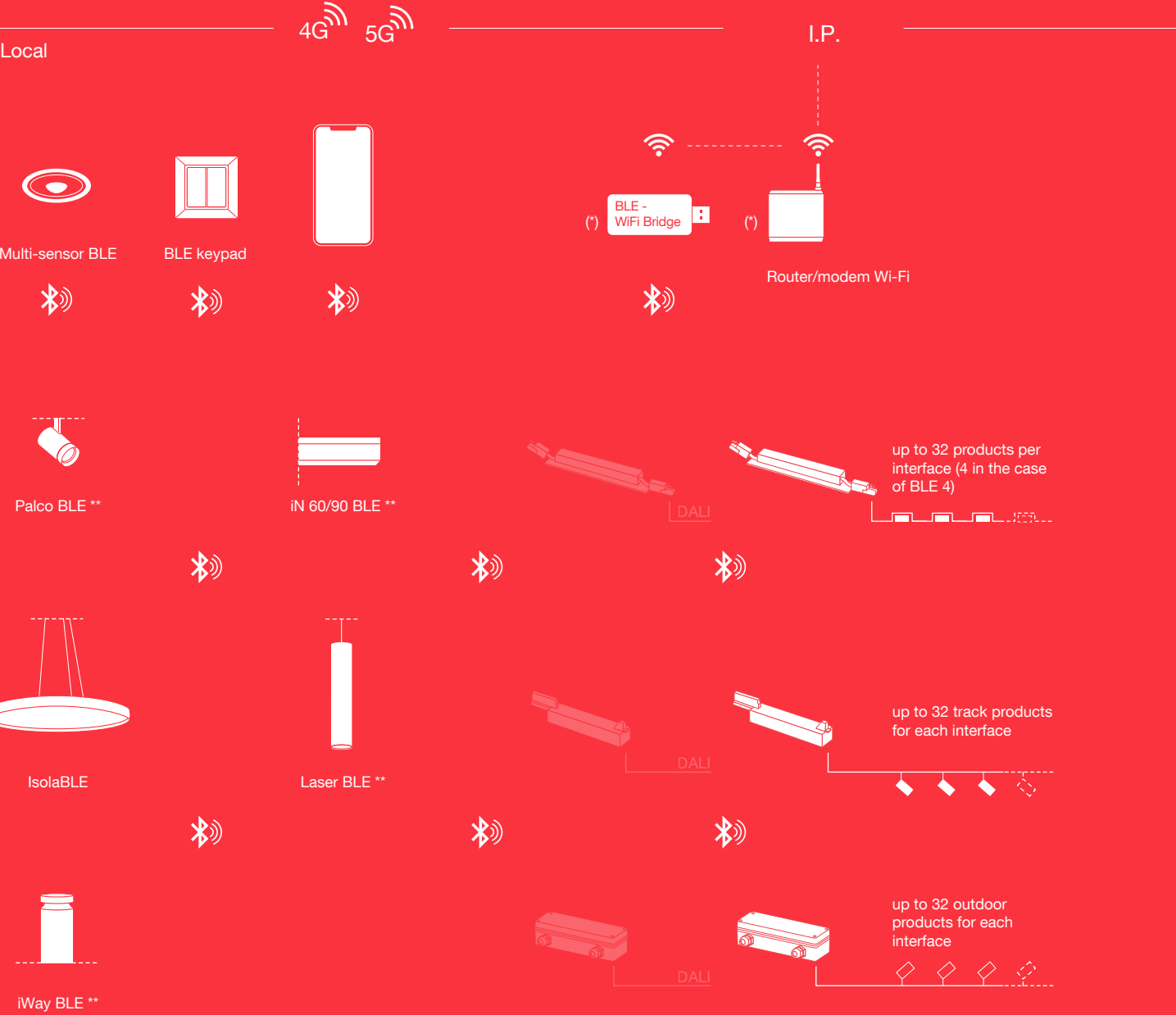
Schedules
Setting the operation of scenarios at fixed times in accordance with a weekly calendar. Operation requires having enough space inside the smartphone or the BLE Wi-Fi bridge.

System architecture

Remote



Local



Max 320 DALI addresses x network / *Bridge and WiFi are required for remote control from PC, smartphone, tablet and the scheduler / **BLE products

Smart Light Control - Quick BLE

System architecture

The iGuzzini Smart Light Control App can be downloaded for free from Google Play and App Store and is used to easily manage each DALI product, call up product groups and activate lighting scenarios from your smartphone or tablet through the Bluetooth Low Energy protocol. BLE communication between smart device and the DALI product takes place through the BLE-DALI interface,

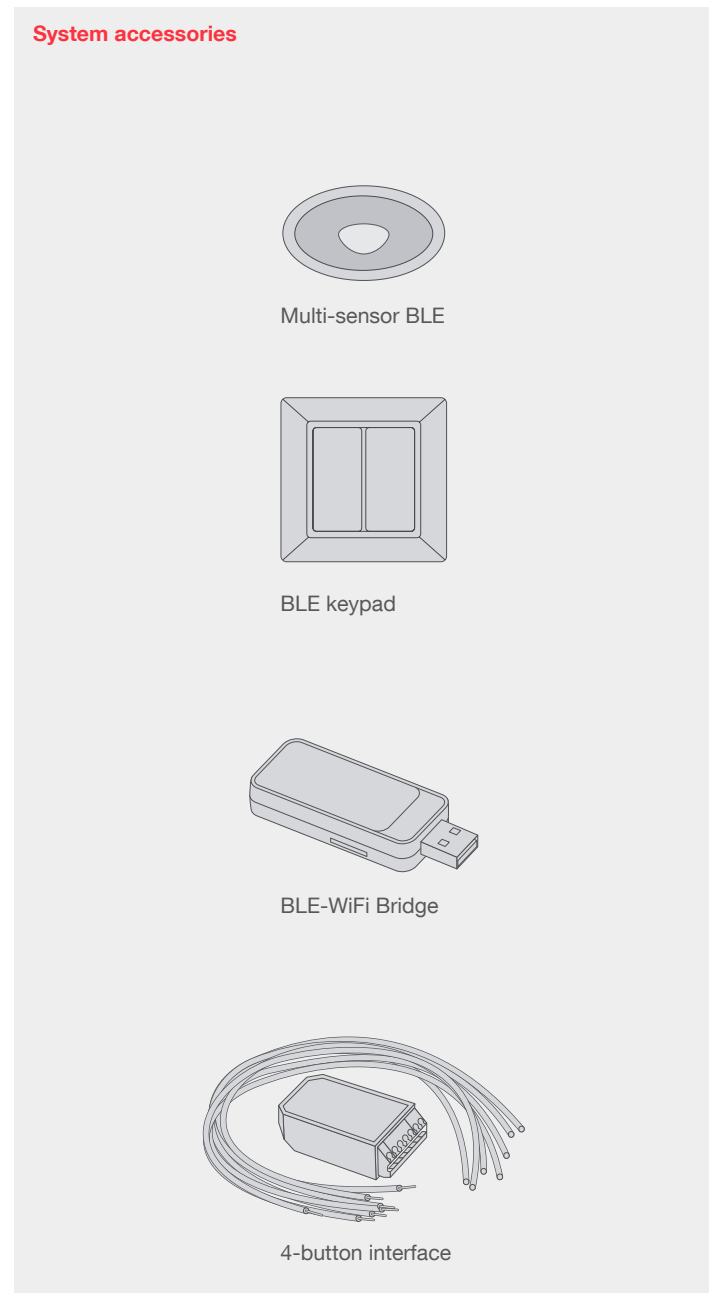
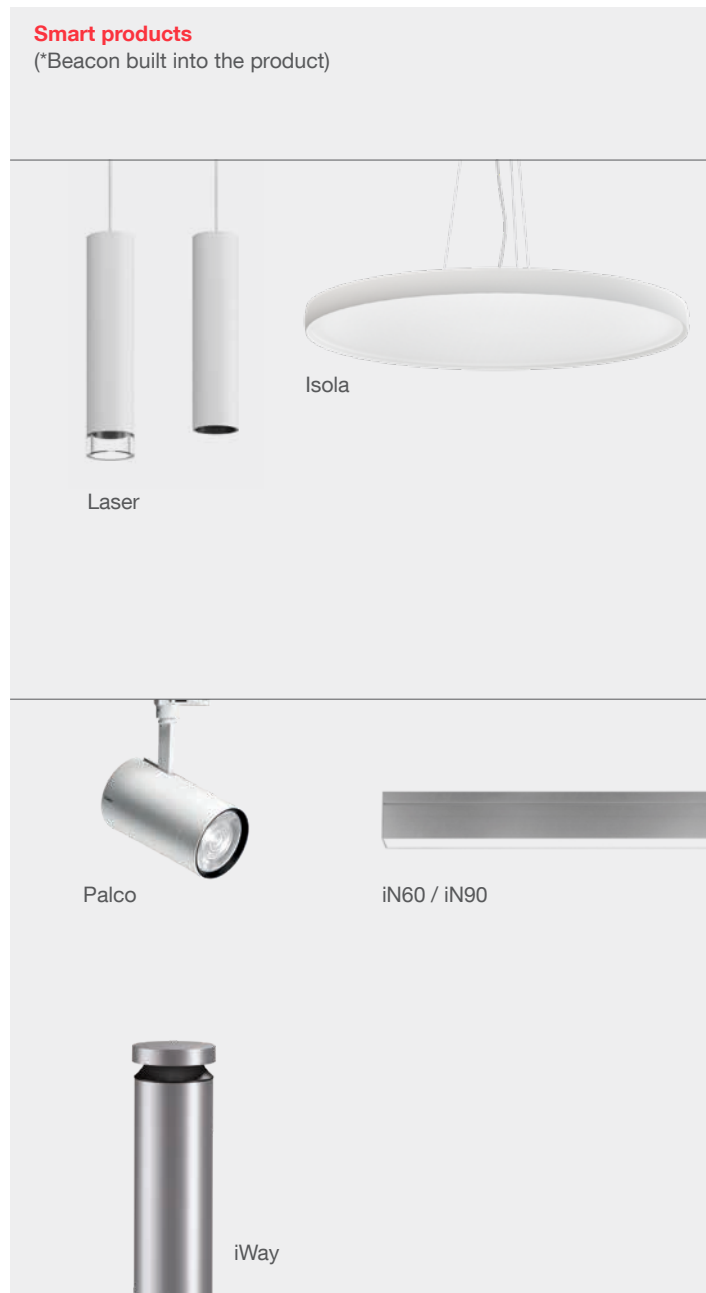
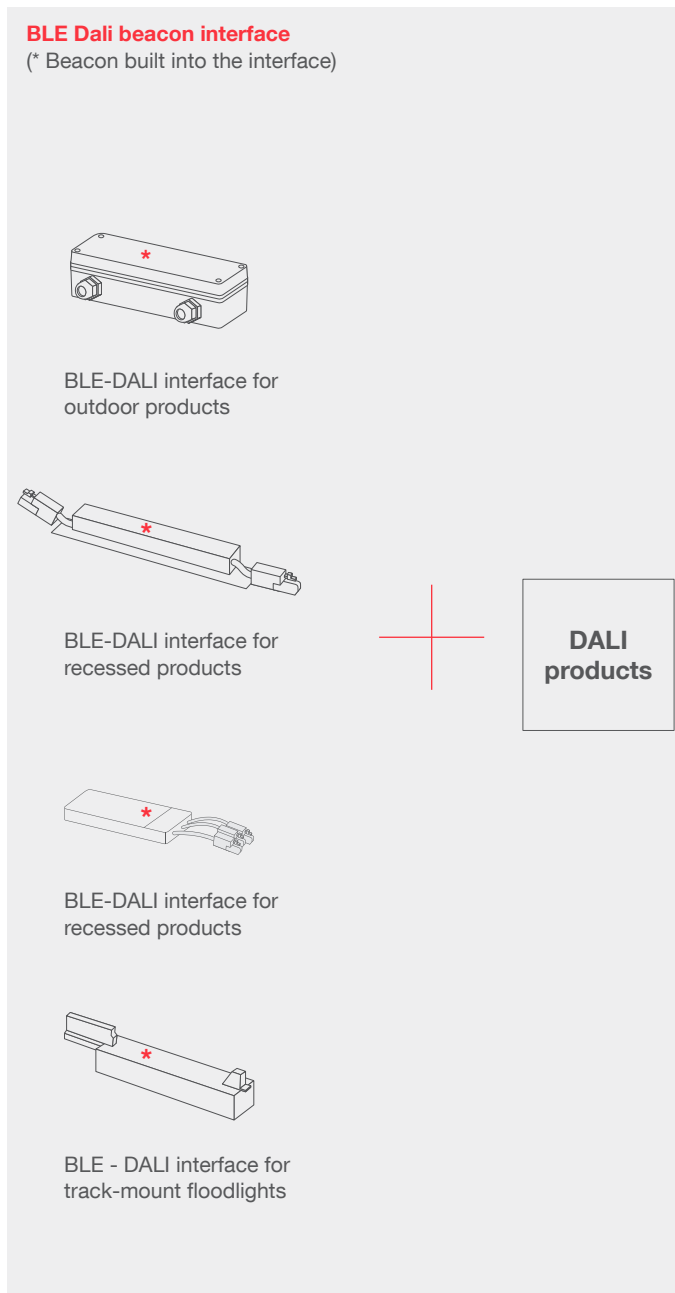
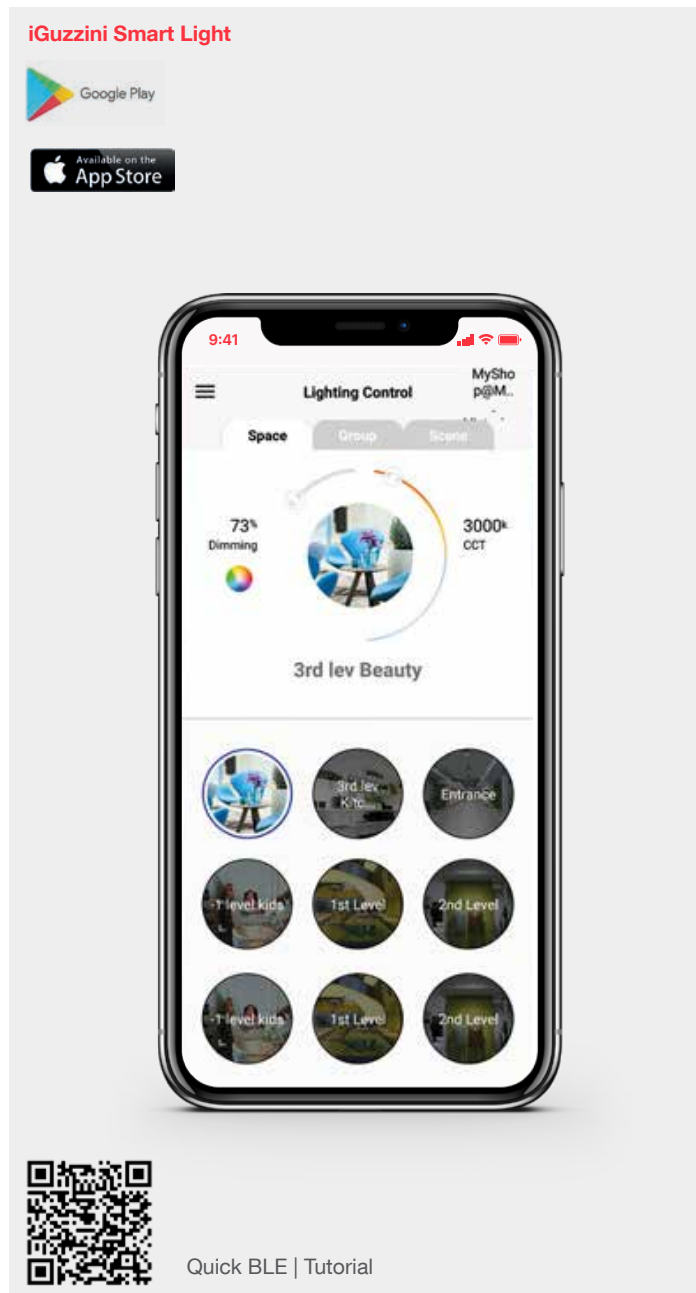
Compatible with Alexa



compatible for indoor devices (including recessed and track types) and outdoor products alike. The interfaces can control a maximum of 32 DALI addresses. It is possible to create up to 8 networks, each of which can control up to 320 DALI addresses. In addition to converting the Bluetooth signal into a DALI signal, the interface also integrates a beacon to activate smart services (e.g. push notifications).

Alternatively, some BLE products are available with an integrated interface capable of communicating directly with the smart device. This is useful when a DALI line is not available. The Quick BLE system also includes integration of other accessories to call up scenarios through a simple self-powered wireless push button panel or manage light in a smart way using wireless multi-sensors capable of

adjusting the level of illumination in relation to the presence of people and the contribution of natural light or to control the system remotely and activate calls for automatic lighting scenarios at a given time and on certain days of the week through the BLE-Wifi interface.



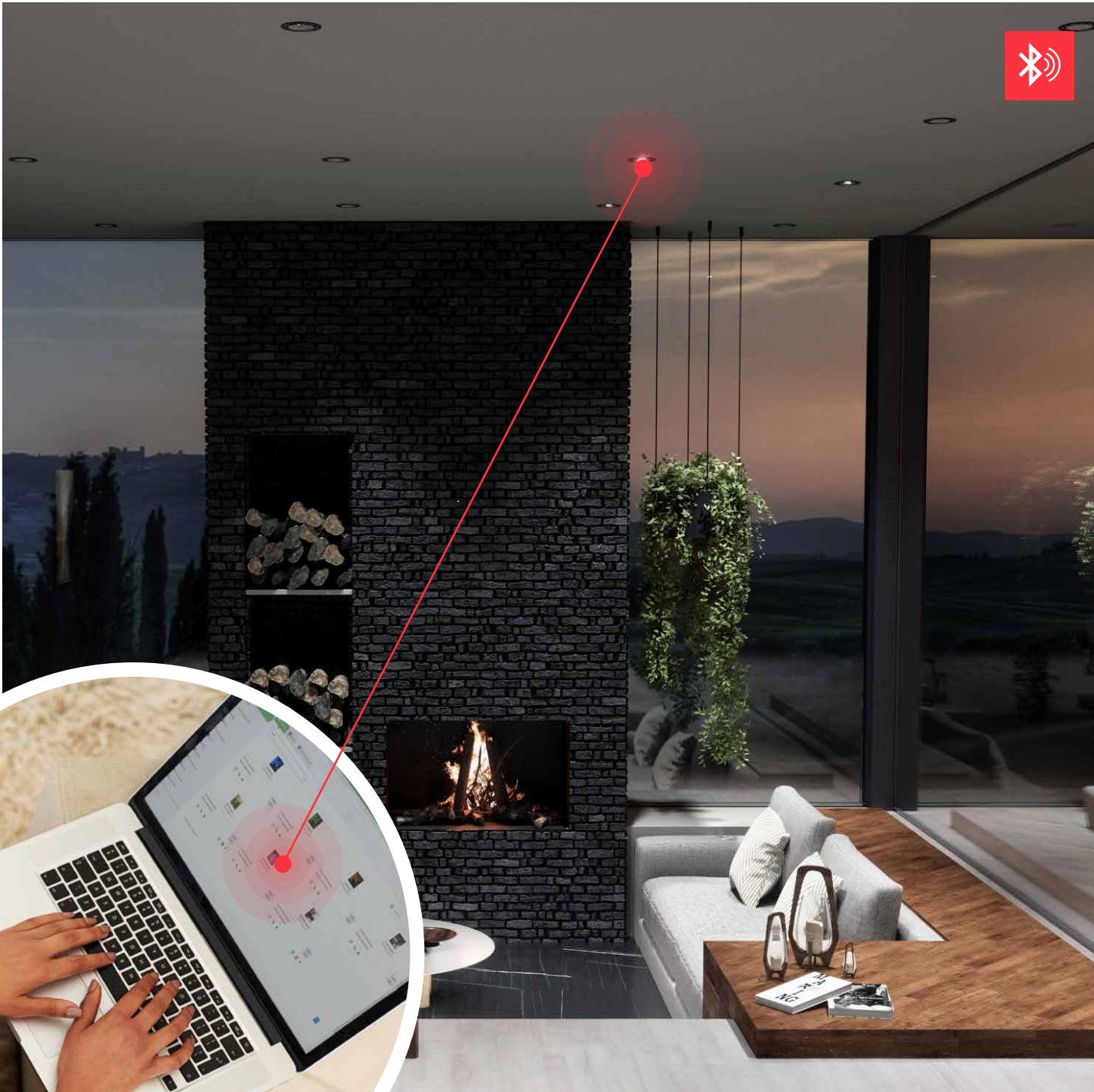
Smart Light Control

Home

Ann is still in the office but she can work in "welcome home" mode from her PC; there only remains a flight and a taxi before she returns home. Light is welcoming, gives presence to absence.

- It is delightful to feel yourself embraced in soft light, sink into the sofa and get your ideas straight again. For a few seconds, then Carlos asks his voice assistant to turn on the lights in the kitchen and then begins to prepare dinner by listening to his favourite music.

So easy, with Quick BLE.



Smart Light Control

Private Garden

In just a few minutes, this garden will be ready to come to life. A party under the night stars is about to begin. Robert only has to worry about preparing the tables, food and drinks while adding a few more chairs and some music. And the lighting? Robert already knows nothing could be easier! Simply choose the App's "party" mode and the stage lighting for your garden is magically ready to welcome your guests! So easy, with Quick BLE.



Smart Light Control

Hospitality

An evening like others, many others, where light creates a relaxed atmosphere ideal for conversation while enjoying fine home-made dishes. Then Greta picks up her tablet and activates the scene setting with a simple click
"Birthday Table 2": the surrounding light dims and the lighting on table 2 comes on suddenly and joyfully.
A second later, the whole room sings in chorus "Happy birthday to you ...!
So easy, with Quick BLE.



Smart Light Control

Culture

A major exhibition will be inaugurated tomorrow. George is calmly wandering around the rooms. He can programme each product directly from the room itself and not from a fixed remote location, as was once the case! He observes his devices and, using his tablet, associates them with a group, sets the lux level and creates the scenic setting. The central system will then be able to count the effective hours of operation.
So easy, with Quick BLE.



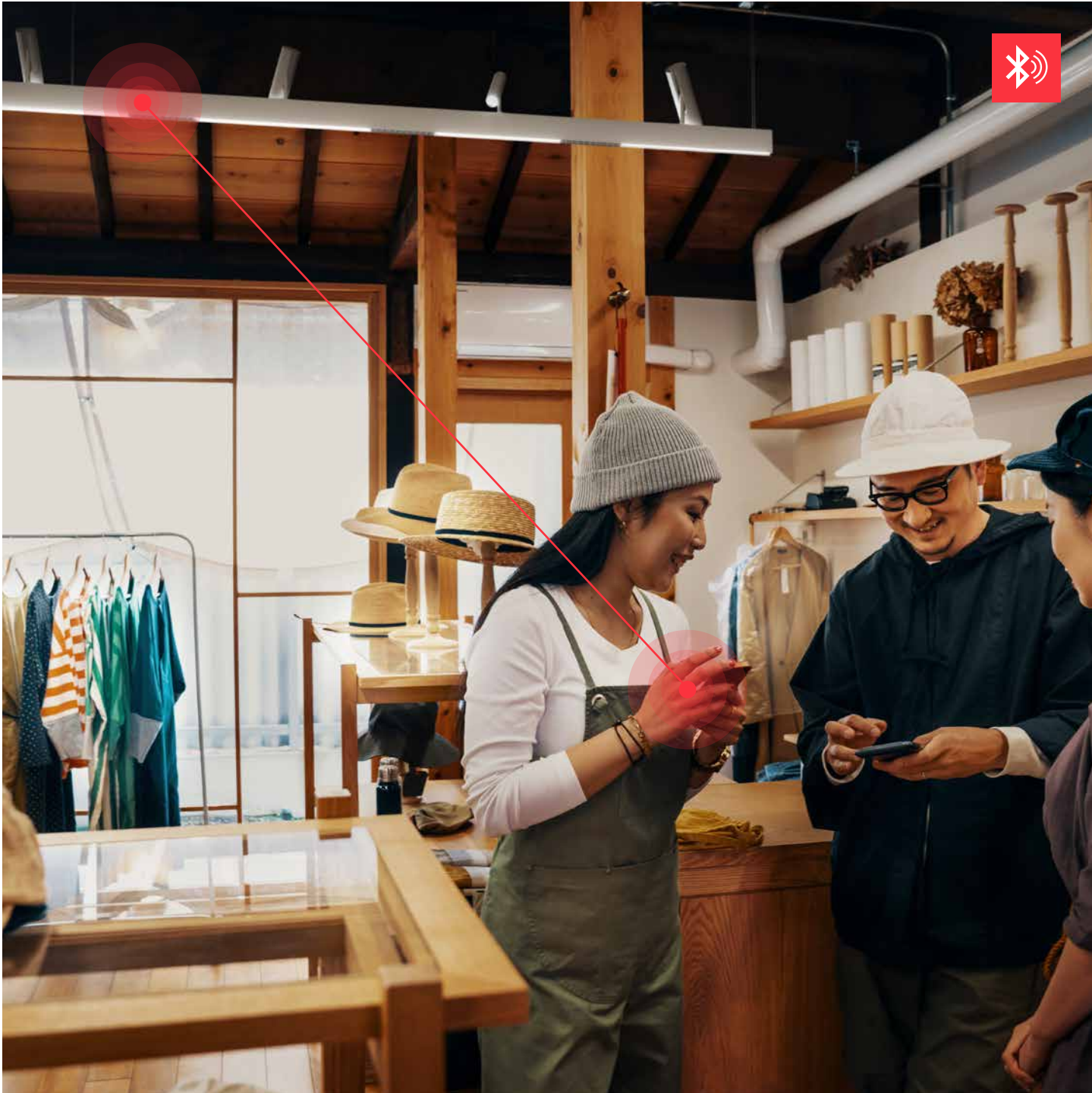
Royal Academy | case study



Smart Light Control

Retail

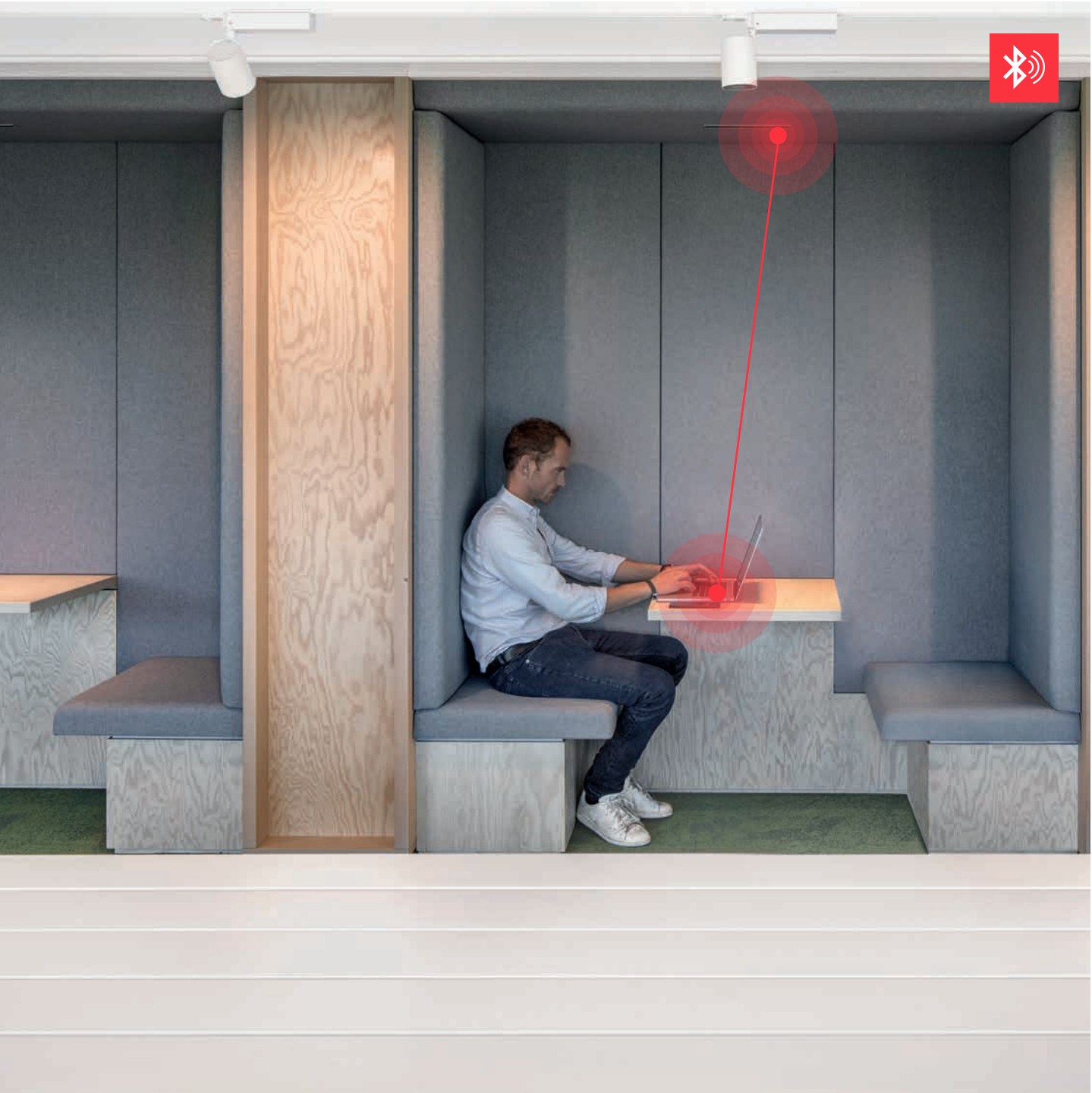
Sarah loves her job. She always dreamt of having her own store and convincing clients that her goods are the best! She knows that light can help her and this is why she created different settings for each season and colour which change automatically. Now, on the other hand, she wants a totally different light. Simply launch the Smart Light Control App and the environment is changed through lighting. So easy, with Quick BLE.



Smart Light Control

Office

Today's offices are for everyone and everyone can choose an office. They are flexible, smart and efficient spaces. A multi-sensor helps light adapt to use with pre-set illumination and visual comfort levels. Alex enters the room, finds a free desk and sits down. He then picks up his smartphone and chooses his lighting set-up to transform the space into his office. So easy, with Quick BLE.



22	Driving information as a value
24	System architecture
26	Applications

Smart Services

Smart Services

Driving information as a value

A dedicated proprietary Smart Services App, or one developed on request by iGuzzini, can be used to send push notifications (text, video or audio) to the user's smart device, manage the space or define a route. Smart services are transmitted to the App by a beacon via Bluetooth. The beacon can be activated via a Dali Bluetooth interface, connected to indoor or outdoor Dali products, be ordered as an accessory for installation in the Superrail or a Low

Voltage track or, lastly, be integrated into certain Smart products: In each case presented, the beacon is always powered through the mains, thereby eliminating the typical maintenance costs for stand-alone beacons. The architecture of a data system is consequently complementary to that of the lighting system by promoting synergy, optimization and integration of devices.



Push Notification
A dedicated App activated on a smartphone can receive text, video and/or audio information that is always up-to-date about items on display or places crossed, thereby providing a richer and more exciting multi-sensory experience.

Contact iGuzzini for more information.



Indoor Navigation
A dedicated App activated on a smartphone allows users to create a personalised route on the way to a given item or place. This is particularly useful in indoor settings such as retail centres and museums but even in airports or public places.

Contact iGuzzini for more information.



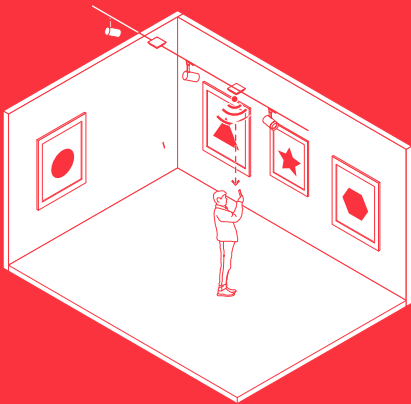
Occupancy/Space Management
This feature improves space management by detecting quantitative occupancy flows and providing useful data for economic savings. This aspect is particularly significant, for example, in rented work settings where optimisation of spaces in relation to effective use is fundamental. In retail settings, on the other hand, it is possible to collect useful information to updating displays of goods in relation to purchasing patterns.

Contact iGuzzini for more information.

iGuzzini Smart Services *



Push notification

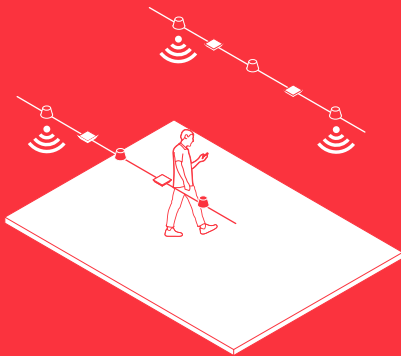


The beacon integrated into the system sends a signal to the smartphone via BLE technology

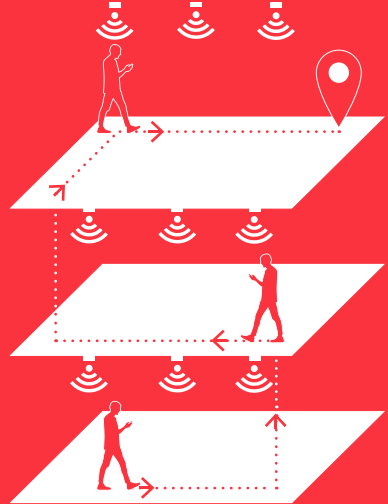


Possibility of accessing useful information for users

Indoor navigation



Beacons identify the user's location

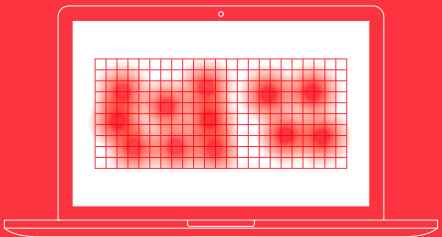


Route tracking

Space Management



Scenario A: high flow



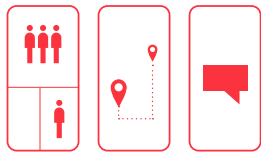
Quantitative occupancy flow data

* Contact iGuzzini for more information.

Smart Services

System architecture

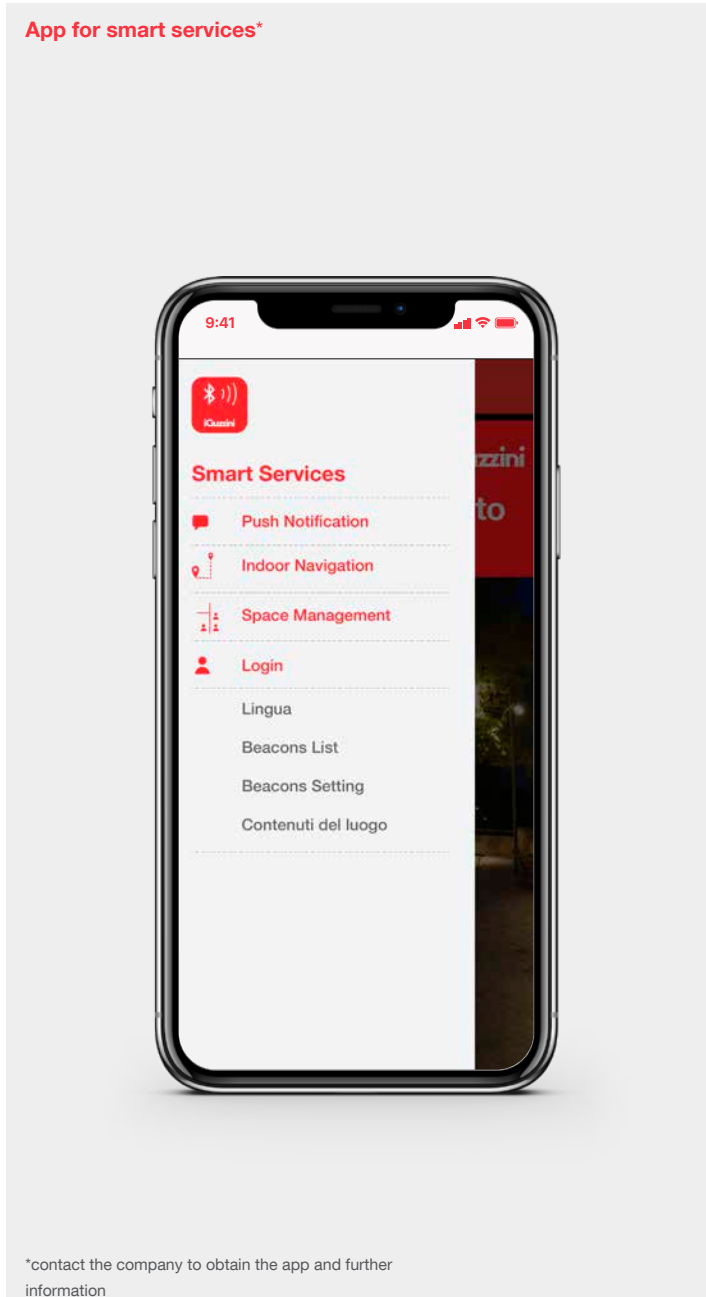
A dedicated proprietor App, or one developed on request by iGuzzini, can be used to send push notifications (text, video or audio) to the user's smart device, manage the space or define a route.



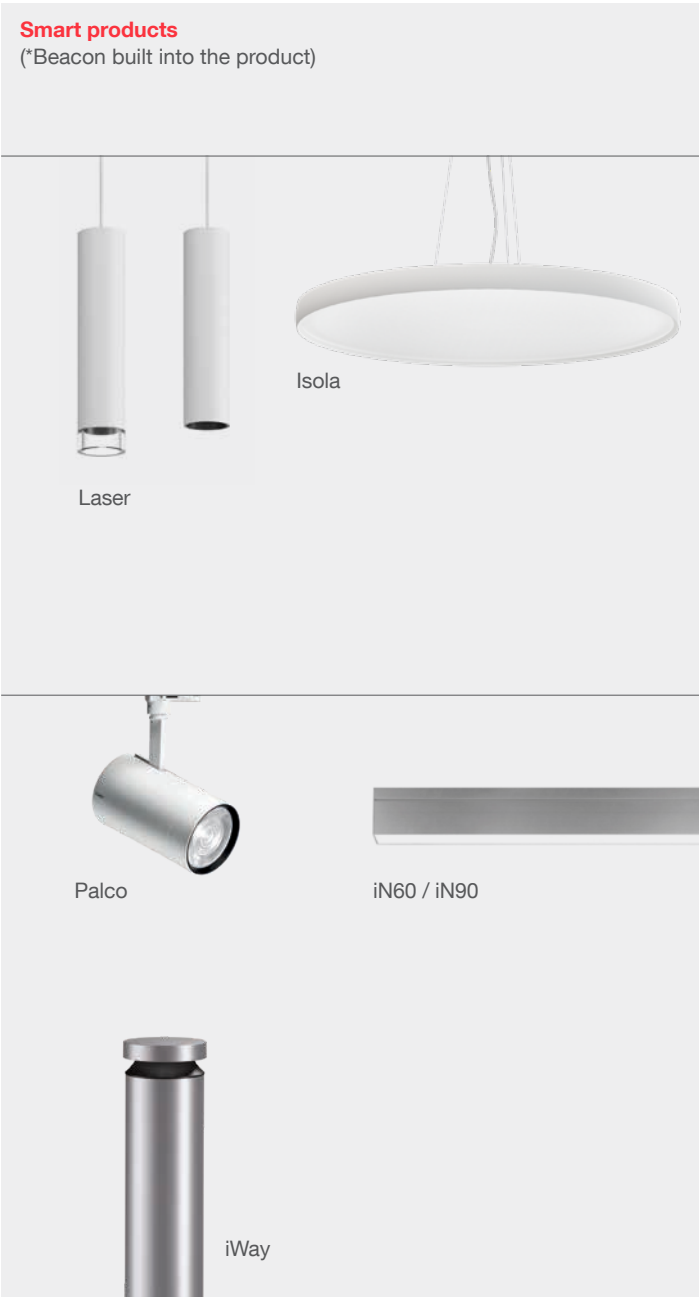
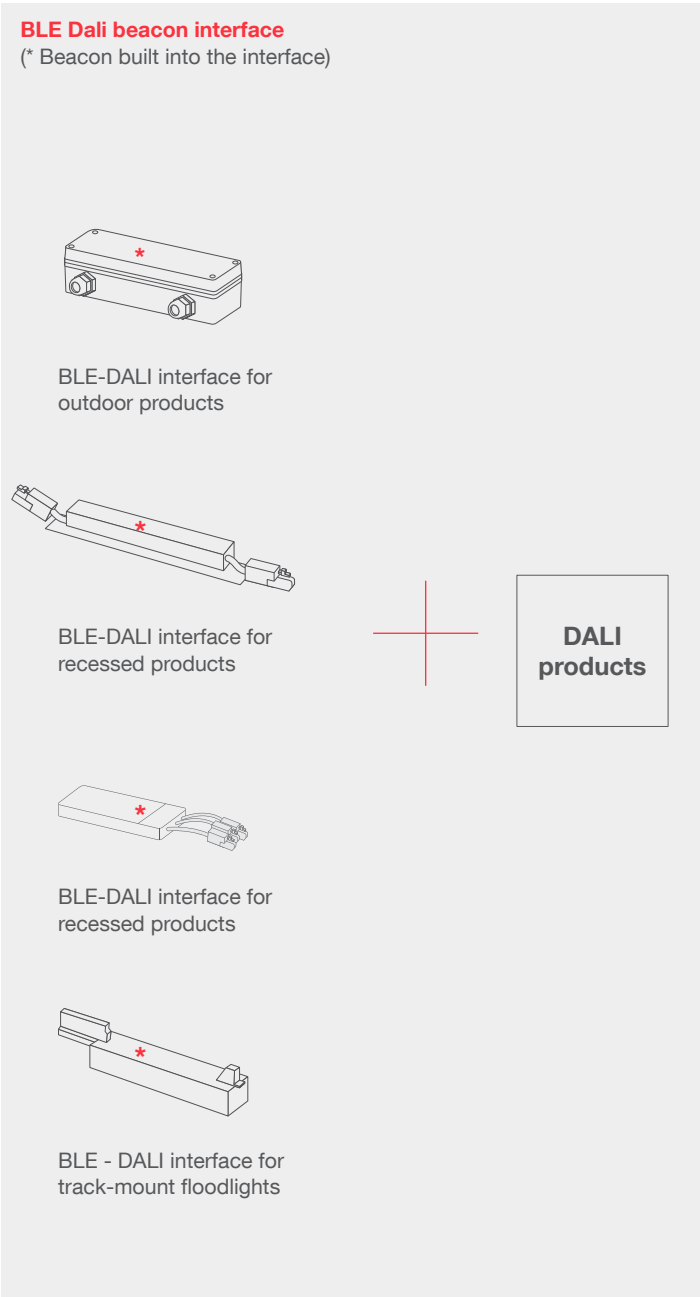
Smart services are transmitted to the App by a beacon via Bluetooth. The beacon can be activated via a Dali Bluetooth interface, connected to indoor or outdoor Dali products, or be itself integrated into certain BLE products or, lastly, be

ordered as an accessory for installation in the Superrail or a Low Voltage track or, lastly, be integrated into certain Smart products: In each case presented, the beacon is always powered through the mains, thereby eliminating the typical

maintenance costs for stand-alone beacons. The architecture of a data system is consequently complementary to that of the lighting system by promoting synergy, optimization and integration of devices.



*contact the company to obtain the app and further information



Hotel

Anne uses her smartphone to enter the hotel even before she sets foot in it. While in the Taxi, she conveniently downloads the App and, on arrival, immediately receives a personalized welcome message (push notification), skips the queue at the reception desk thanks to check-in performed by the App and follows the route that each beacon indicates until she reaches her room. A smart hotel for smart people!



Hospital

Mark passes through the main entrance holding his smartphone, opens the App and proceeds quickly, passing many bewildered people trying in vain to understand the coloured direction signs at the top, bottom, left and right. Mark follows the route indicated by the App and transmitted via the beacons in the system and arrives easily, quickly and safely at his destination. A smart service for smart people!

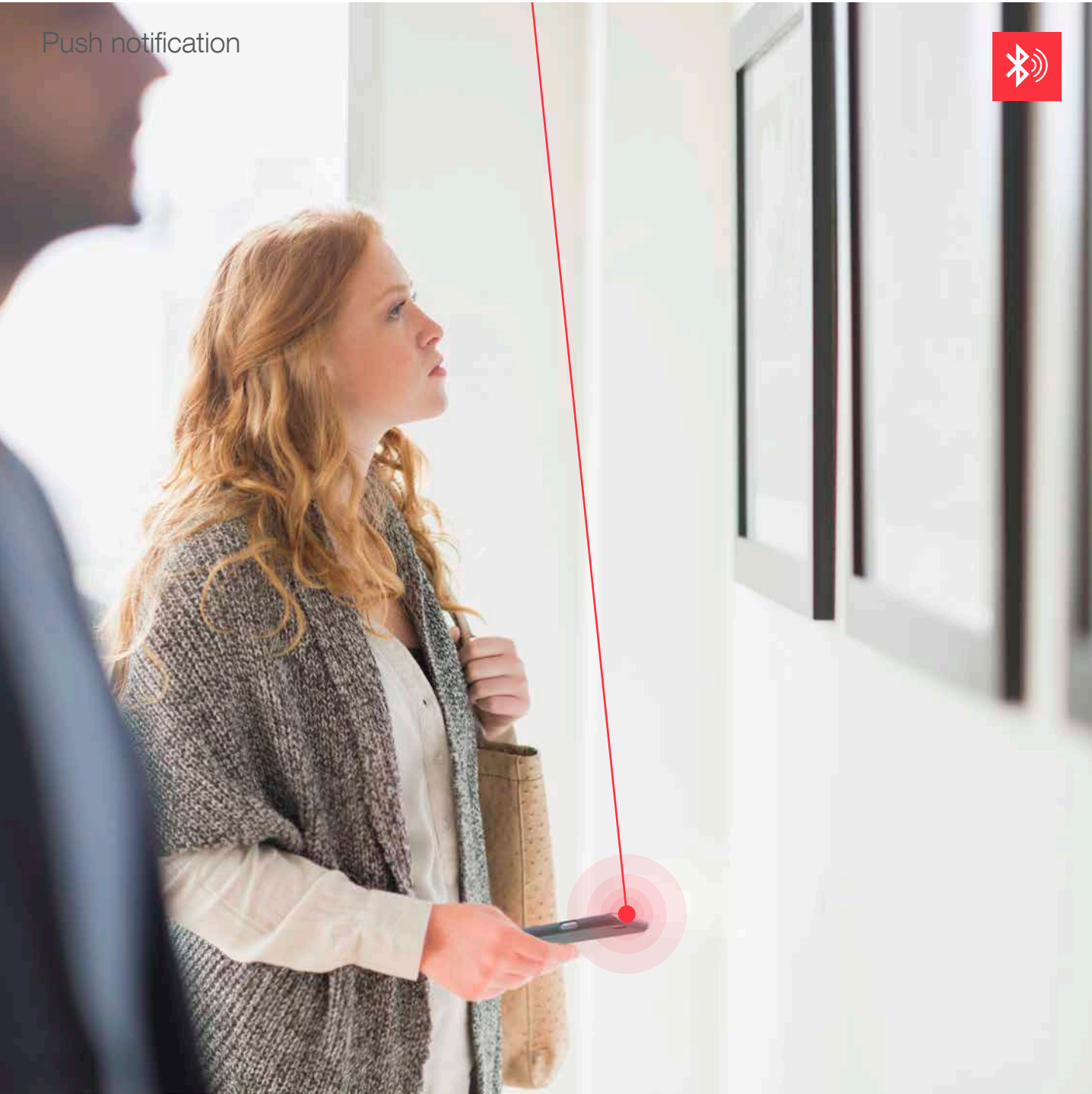


Culture

Sophia admires every work in meticulous detail and loves analysing the painter's thoughts and biography. Ted is very keen on history and only wants information about the work itself in its historical context. Thanks to a beacon and a smartphone, Sophia and Ted can look at the same painting but read a different world in it in a smart way!

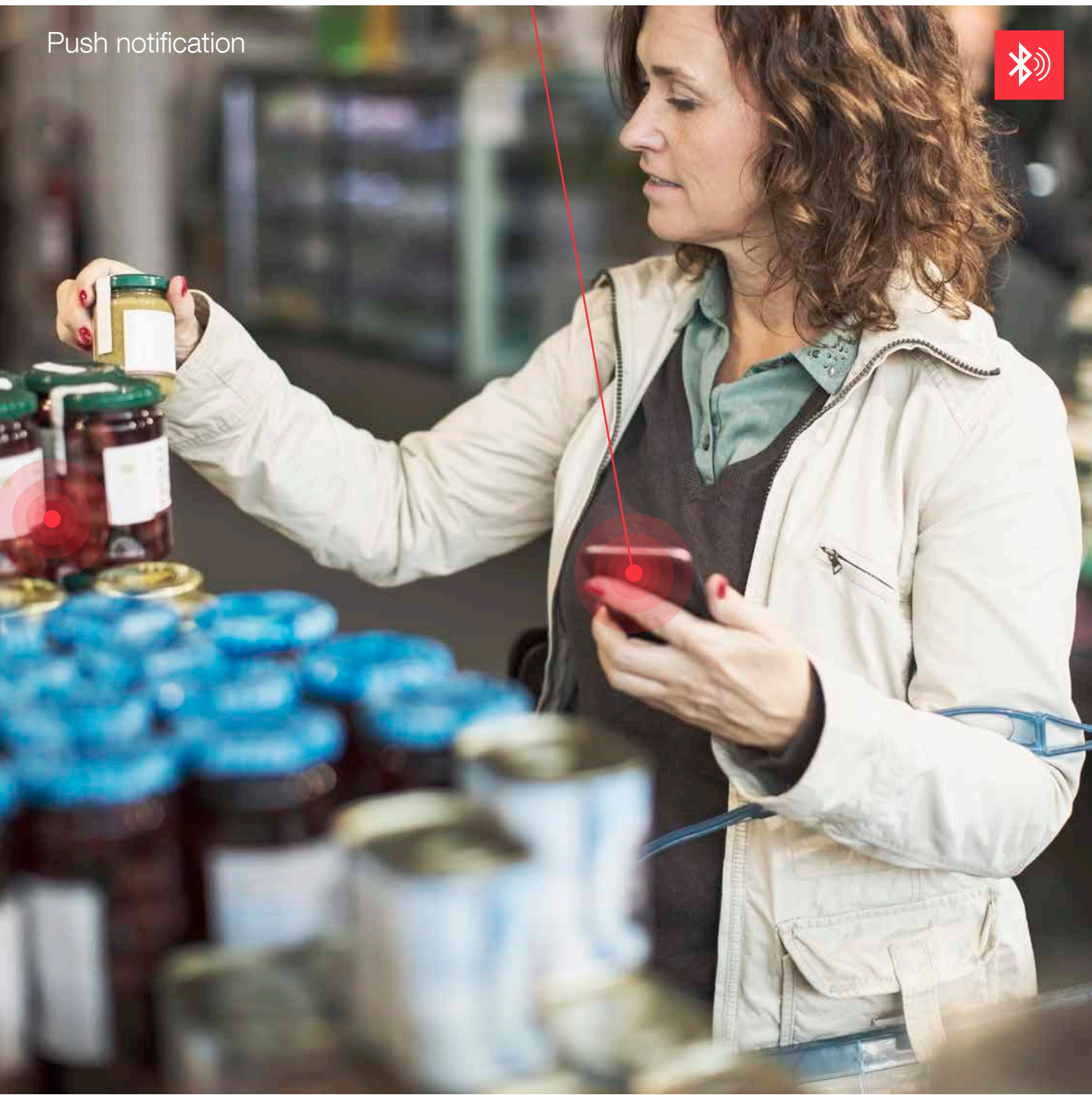


Palazzo Sturm | case study



Retail

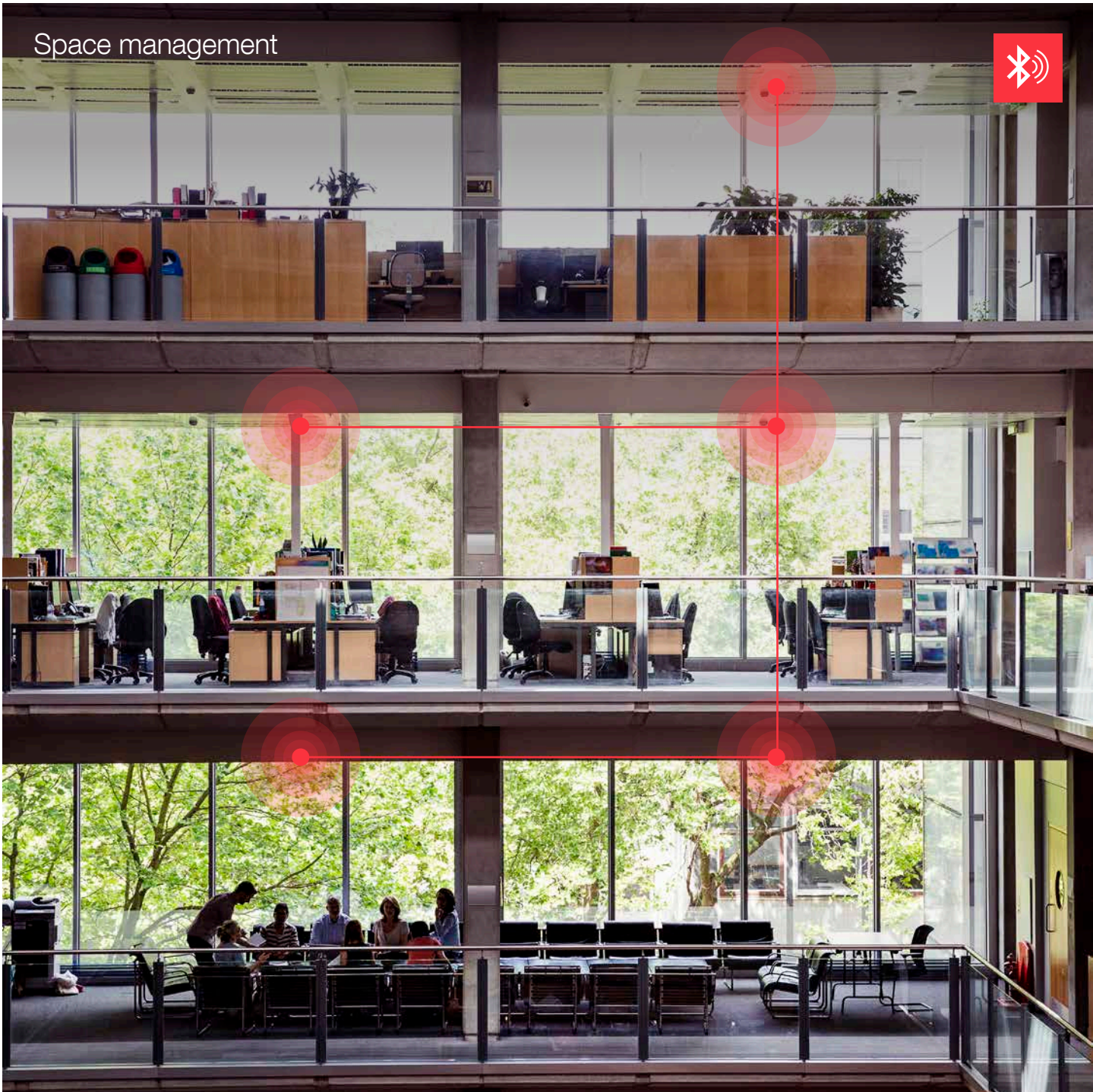
Maria wants to know every detail about what she buys: Origin, materials and perhaps even suggestions for use. He opens the App provided by the retailer and begins to discover a parallel reality simply by reading the information (text, audio and video) on his smartphone near the products on display. Be smart to be aware!



Smart Services

Office

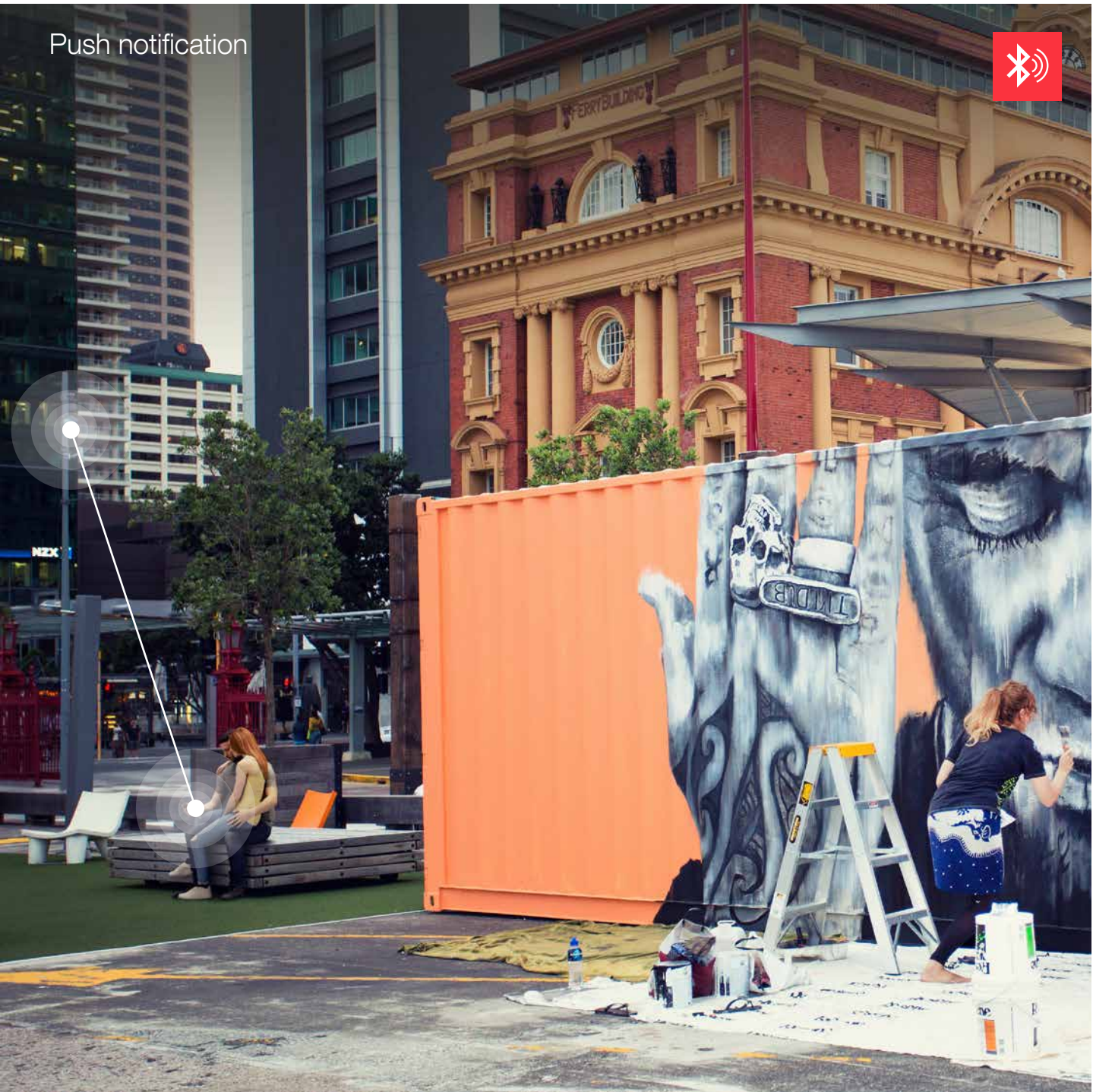
Frank is a facility manager. He analyses space management data of his building with timely precisely on his smart device to evaluate time slots, duration and users.
This means he can adapt space to meet the needs of his organization, thereby ensuring service, efficiency and flexibility.
A building is smart when the use of its facilities is smart!



Smart Services





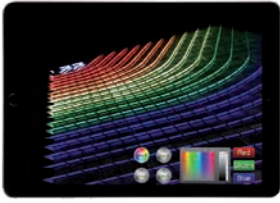
Park

The first street art festival in his city will get under way tomorrow!
Thierry is sitting on his usual bench in the park close to his home:
Thanks to his App, he receives all information about the works near him, artists and events ... What a wonderful outdoor museum!
A creative smart experience for creative smart explorers!



Overview

Intelligent Light Solutions (ILS)

				
Quick BLE	Quick DALI	Quick DMX	Master Pro Evo KNX	Master Pro DMX
Bluetooth		DALI	KNX	DMX
Large Programmable Open systems		Master Pro Evo KNX	Master Pro Evo KNX	Master Pro DMX
Small and medium Programmable Open systems	Quick BLE	Quick DALI LMS Quick Dali Touch Display 7” ★	★	Quick DMX Touch DMX 512 Touch DMX 128
Small and medium Plug and Play systems		Quick DALI LMS Quick Colour Quick Dali Touch Panel TWRGB Dali Touch Panel TW Dali Touch Slide TW		Quick DMX Touch DMX 512 Touch DMX 128

(*) small/medium systems can be implemented using the panel (code Q737) with related components and programming

	BLE BeCon track LV	BLE DALI 4 Interface	BLE DALI 32 Interface	Devices** with BLE-DALI interface	iGuzzini Smart Light Control App	Dedicated App for Smart Services
Smart Light Control		•	•	•	•	
Smart Services Push notification	•	•	•	•		◦
Smart Services Indoor Navigation	•	•	•	•		◦
Smart Services Occupancy/Space Management	•	•	•	•		◦
Smart Light Control + Smart Services Smart Hybrid Systems	★	•	•	•	•	◦

* Can work in conjunction with BLE-DALI 4 and/or BLE-DALI 32 interface
◦ Contact iGuzzini for additional information about the dedicated App for Smart Services and the composition of the system.
** Isola and Laser



Quick BLE | Tutorial



Quick BLE | User Manual



Quick BLE | User Guide

